



4 DAY WILDLIFE SAFARI KRUGER PARK SAFARI

2025

From

Andrew Wagner

Prepared for



Your Itinerary



Day 1: Journey to Satara

On our first day i will collect you from either your hotel or airport and then we will depart for the nearest Kruger Gate entrance which is Orpen Camp.

On Day One i will introduce you to Kruger and its history and heritage as well establishment of the Park, its policies as a conservation hub and then of course the wildlife. With 147 Mammals , 520 Birds, 172 Reptiles, 2400+ flora species and 35 botanical zones spread over 2 million hectares (20,000sq km) there is a lot to see and experience.

Our overnight camp for the next 2 night will be Satara Camp. Situated in the Central region of Kruger, Its also home to 25% of the parks Lions which makes the game viewing very exciting.

Dinner will be served at the Camps restaurant from 18h30.

Day 2 : Exploring the Central Region to Olifants Camp

Day 2 will start early with a sunrise coffee and then departing camp and heading North to Olifants Camp for brunch and explore the olifants river system. This is great for a variety big game species as the grasslands are full of Zebra, Giraffe, Wildebeest, Buffalo and Elephant. Apart from Lion the area is wonderful for Spotted Hyena, Black-backed Jackal and the fastest of them all - Cheetah. I have a few particular roads in this area to maximise on both game viewing and scenery.

Dinner will be again from 18h30 at Satara Camp

Day 3 : Heading South East to Lower Sabie Camp

Day 3 will start early with a sunrise coffee and then departing camp and heading south to Tshokwane for breakfast. After breakfast we head to one of my favorite lookout point in that of Orpen Dam and Nkumbe lookout and then will continue into the game rich savanna of the south eastern basalt plains. We border close to Mozambique and our Camp will be on the perennial Sabie River which is a life blood river to the South. We will explore the Sabie riverine thicket before making our way to Skukuza Camp for the evening.

Dinner will be again from 18h30 at Skukuza Camp.

Day 4: Heading back to Skukuza and Exit

Day four will start early with a sunrise coffee and then departing camp and heading back to your drop off destination. There are two possible routes we could take through the western side of the park and this will depend on what we have seen and still need to find. Final drop-off will be late afternoon at either airport or hotel.

4 Day Overview



Included :

- Breakfast, Lunch & Dinner included.
- All park and community fees for 4 Days.
- 3 Night Accommodation in a 2 Sleeper Bungalow with Bathroom
- Pick Up and Drop Off from local gates, airports or hotels.
- Private Safari Guide .
- Private Open Safari Vehicle.
- Daily mineral waters and Coffee, Tea and biscuits on vehicle.

Excluded :

- Passport and visa costs (if applicable).
- Local Flights.
- Gratuities and items of a personal nature
- Alcoholic drinks and meals not specified.
- Transfers not specified.
- Pre and post accommodation.

Accommodation inside the Kruger National Park will be at Satara Camp for the 2 nights and Skukuza for 1 Night .Rate is based on 1 x Standard 2 Sleeper Bungalow with on-suite bathroom, AC or Fan. All main camps have generators so power is guaranteed.

Both Camps well positioned in an area of Kruger with incredible access to the surrounding central and southern savanna's which offers some of the highest mammal populations as well as great bird diversity and wonderful sense of wilderness.

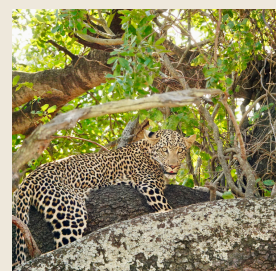
The camps have a rustic charm, with traditional African cottages dotted through the thick bush. At night the clicks of fruit bats is fused with the chirping of cicadas and crickets. The calls of owls and nightjars add to the symphony that is punctuated intermittently by the whoop of hyena, the screech of jackal and the roars of lion.

Rate :

Total 4 Day Safari @ R24,822 per person. (Single and Group rates available)

Please note our terms and conditions can be found on the following link :

<https://www.safaria.co.za/terms-conditions/>



Accommodation



Accommodation in the Kruger National Park will be in a traditional 2 sleeper Bungalow which will be fully furnished and serviced daily with bed linen, towelling and the necessary amenities.

Each Bungalow has electricity with an attached on-suite bathroom which includes, toilet, shower and basin. Each bungalow is based on a self-catering basis and as such is equipped with a basic kitchen and braai (barbecue) area on the patio.

All rooms and living areas are equipped with either a ceiling fans and/or air-conditioning unit.

All the camps that we utilise also have a central restaurant and shop which offers a wide variety of food and beverage items as well as basic toiletry, clothing and curio.



Confirm your Safari

Thank you for your booking, we cant wait to show you the Kruger!

Thank you for choosing Safaria for your upcoming safari adventure to the Kruger National Park! We are thrilled to have you join us on Safari through one of Africa's most iconic wildlife destinations. Your booking has been provisionally confirmed, and we cannot wait to share this unforgettable experience with you. We are now at the final step of your booking.

- Once you are satisfied with the itinerary, a 50% deposit will be required to secure your Overnight Safari and the accommodation. Once accepted a further email will now be emailed to you with an invoice that includes wire banking details or alternatively a secure credit card payment link to be completed.
- This is the last step to finalise and confirm your booking.
- Final 50% payment is due 30 prior to your Overnight Safari. Kindly note that failure to make full payment or deposit payment may result in cancellation of your reservation.

Once your payment has been made, its time to prepare for your safari, we would like to provide you with some useful information to ensure you make the most of your time with us in the Kruger National Park. These tips and recommendations are intended to help you plan, pack and prepare for your safari.

Seasons and Annual Weather - Kruger National Park experiences two main seasons:

- Dry Season (Winter from May to September) offers cooler temperatures and minimal rainfall. Days are generally sunny, and the vegetation becomes sparse, making wildlife easier to spot near water sources.
- Wet Season (Summer from October to April) brings warmer temperatures and occasional heavy rains. The landscape flourishes with lush greenery, and many animals give birth during this time, resulting in an abundance of wildlife sightings.
- Summer temperatures range from 15C to 45C with afternoon thundershowers.
- Winter temperatures range from 5C to 25C with occasional wind and overcast conditions.

What to Wear:

- Light, breathable clothing for summer days, including long-sleeved shirts and long pants to protect against the sun and insects.
- A warm jacket or sweater for early mornings and afternoons, as temperatures can drop significantly during the cooler winter months. We recommend that you layer your clothing as middays can be warm.
- Sandals in summer and comfortable closed shoes for winter.
- A wide-brimmed hat and sunglasses to shield yourself from the African sun.
- Beanies for winter mornings and rainproof jackets for summer afternoons in the event of rain.

Confirm your Safari

Safety on Safari:

Your safety is our utmost priority. In preparation for your trip here are a few things to remember when on the Open Safari vehicle.

- The vehicle is completely exposed so that you can really experience the wilderness but that means noise can effect the wildlife sightings so its important to speak softly and follow the queues of your guide.
- No standing up on the vehicle, no smoking, no throwing anything out of the vehicle and we recommend a small back pack for your personals when we do stop at the camps and get of the vehicle.
- We don't feed the animals, we don't whistle or try call them.
- Please note you will be required to sign an Indemnity for both Safaria and South African National Parks on arrival at the gate of entry to the Park.

What to Bring on Safari:

- A good quality camera with spare batteries and memory cards to capture the incredible wildlife moments.
- Binoculars for enhanced wildlife viewing and birdwatching.
- A good Hat along with sunscreen that has a high SPF, insect repellent, and any personal medication or first-aid requirements you may need whilst out.
- A refillable water bottle to stay hydrated throughout the day.
- Mobile phone charging cable as their are USB points on vehicle.
- Your travel documents, including passports, necessary permits, and travel insurance.
- & last but not least, bring your curiosity and good vibes.

We hope these tips help you better prepare for your upcoming adventure with us in the Kruger National Park. If you have any further questions or require assistance, please do not hesitate to reach out to me directly. We are here to ensure your safari experience is seamless and unforgettable.

Once again, thank you for choosing Safaria. We are excited to share this special journey with you and look forward to creating lifelong memories together in the heart of the African wild.

Safe travels, and see you soon!

Sincerely,
Andrew Wagner
Owner & Guide